

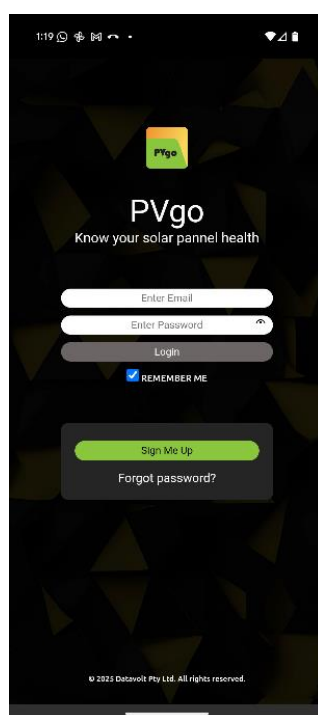
PVgo android app

User Manual



Scan QR code to download PVgo app from play store

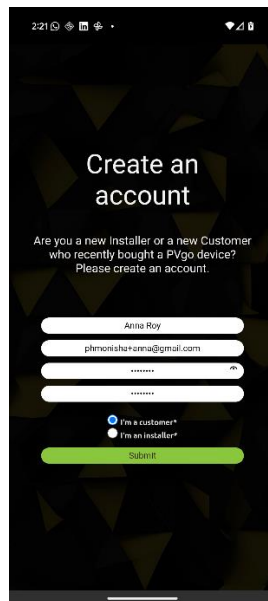
1) Login page



Existing customers: Enter login credentials → Login

New customer: Click on 'Sign Me Up' → Create an account

2) Create an account

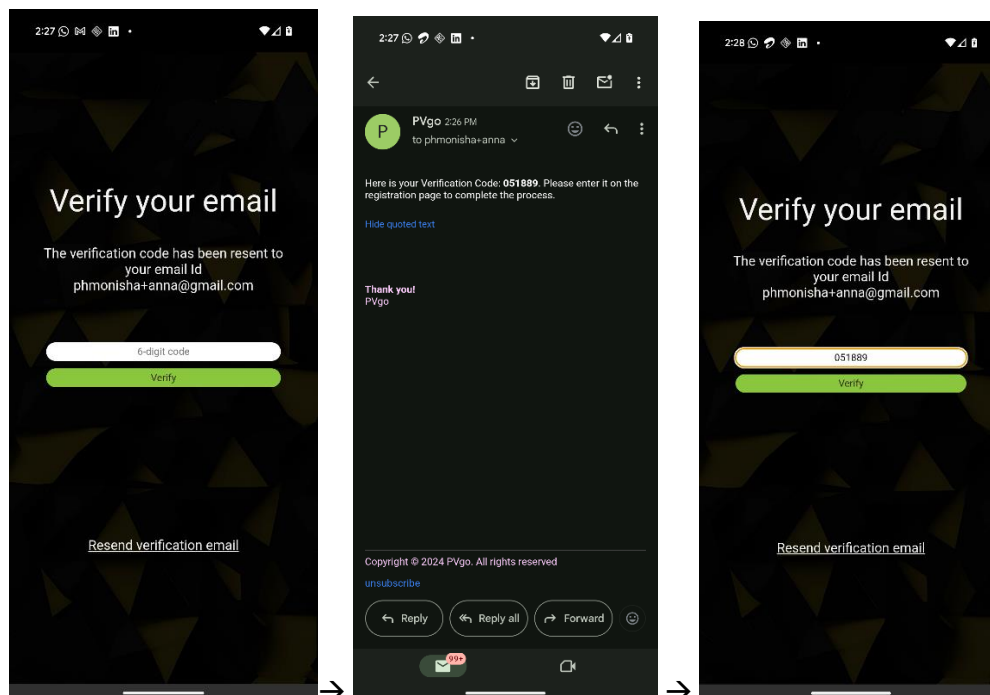


Enter Customer/Installer name, email, password

Note: If you are a customer who purchased PVgo to monitor your solar panel's health, please select 'Customer'. If you are a distributor of PVgo devices, please select the 'Installer' option.

Click Submit → Verify your email

3) Verify your email



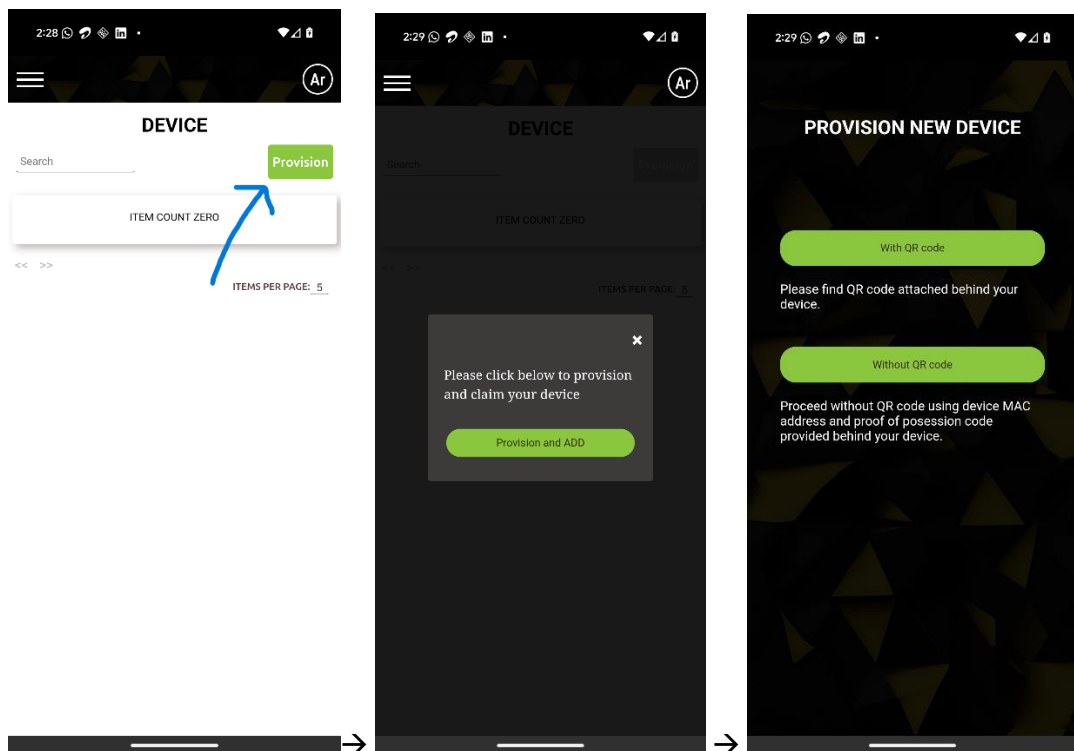
A 6-digit verification code will be sent to your email address. Please enter the code in the app and click 'Verify'.

If the verification is successful, an account will be created using your email ID and password. You will then be redirected to your account, where you can proceed to import your PVgo device.

4) Provisioning PVgo device

Here provisioning refers to the process of connecting your PVgo device to your home Wi-Fi network.

On the Device page, click the 'Provision' button → then select 'Provision and Add' → you will be directed to the 'Provision New Device' page.



5) QR code for Provisioning



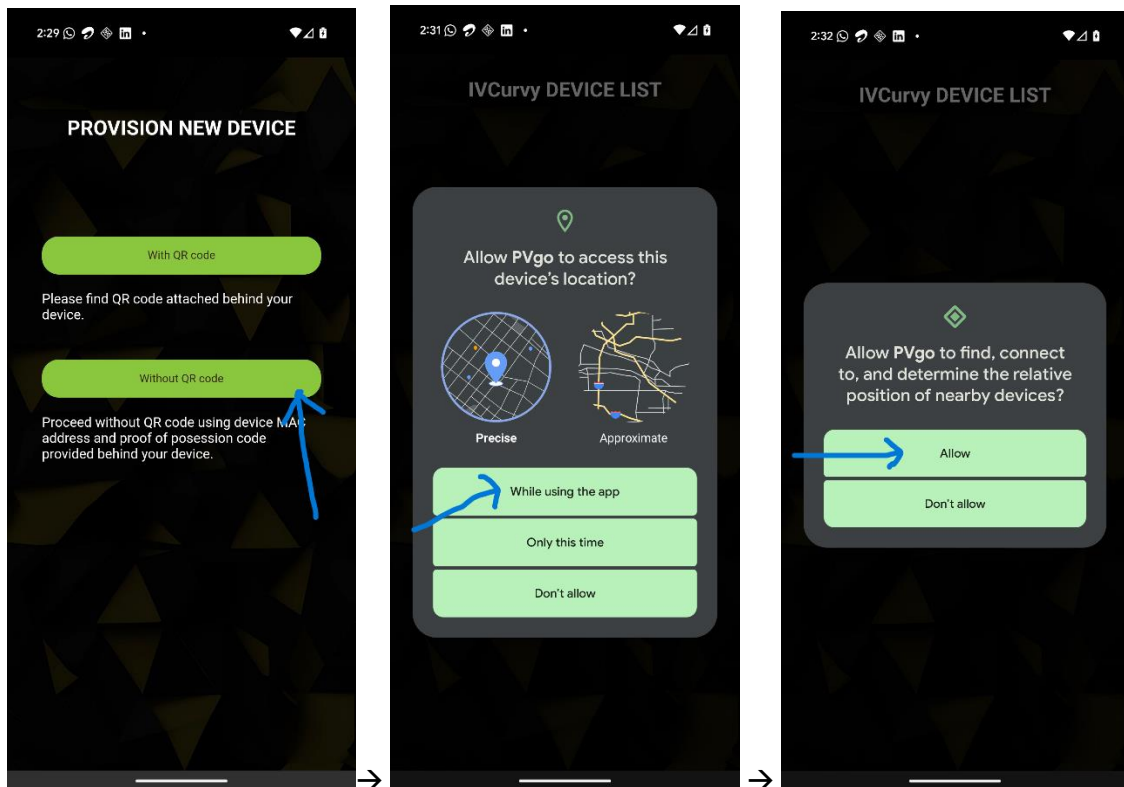
You can find a QR code sticker like this attached on your device. This QR code sticker also locates the position of the touch sensor which helps in rebooting the device when you want to re-do the provisioning in case of Wi-Fi password change or Wi-Fi network change if any in future. You just have to long press this sticker for

enabling reboot before trying to provision the device. When you hear the music playing, it is a confirmation that reboot is successful.

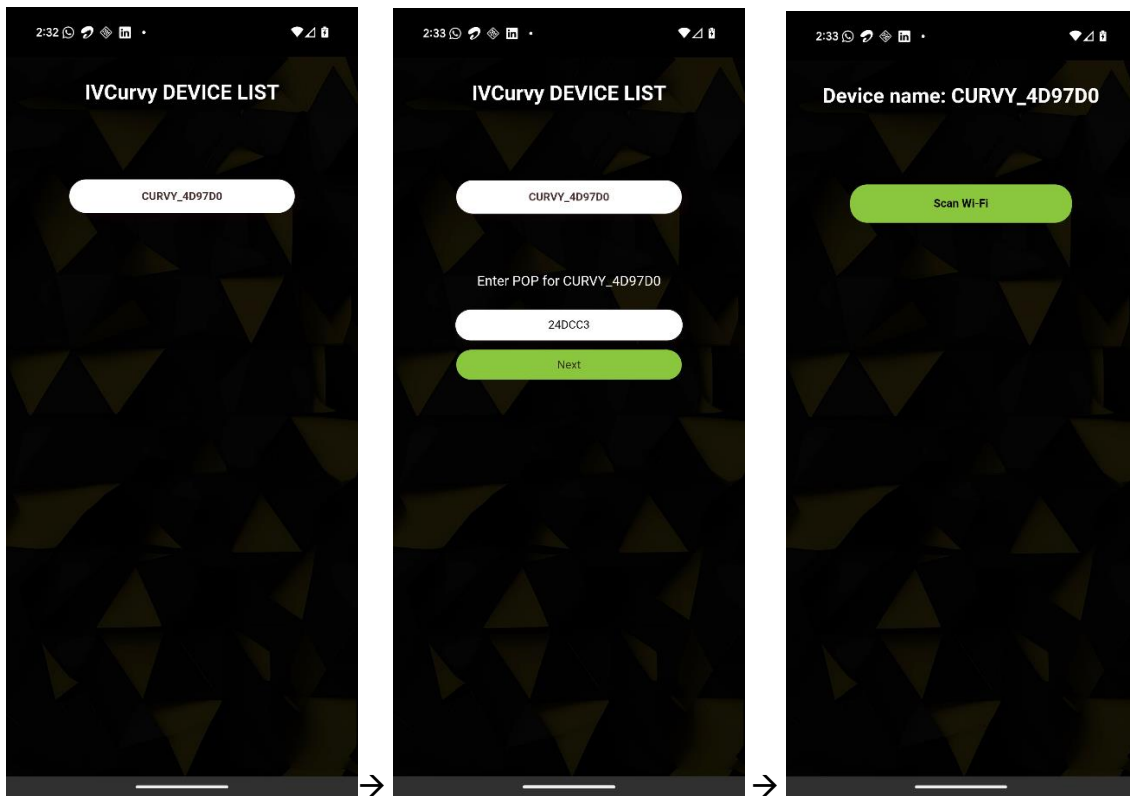
Important: Switch on the Bluetooth on your phone.

- 6) Either you can go for Provisioning **With QR code**(require phone camera) or **Without QR code**. If you opt for provisioning without QR code, you will have to enter the POP manually.

Without QR code:

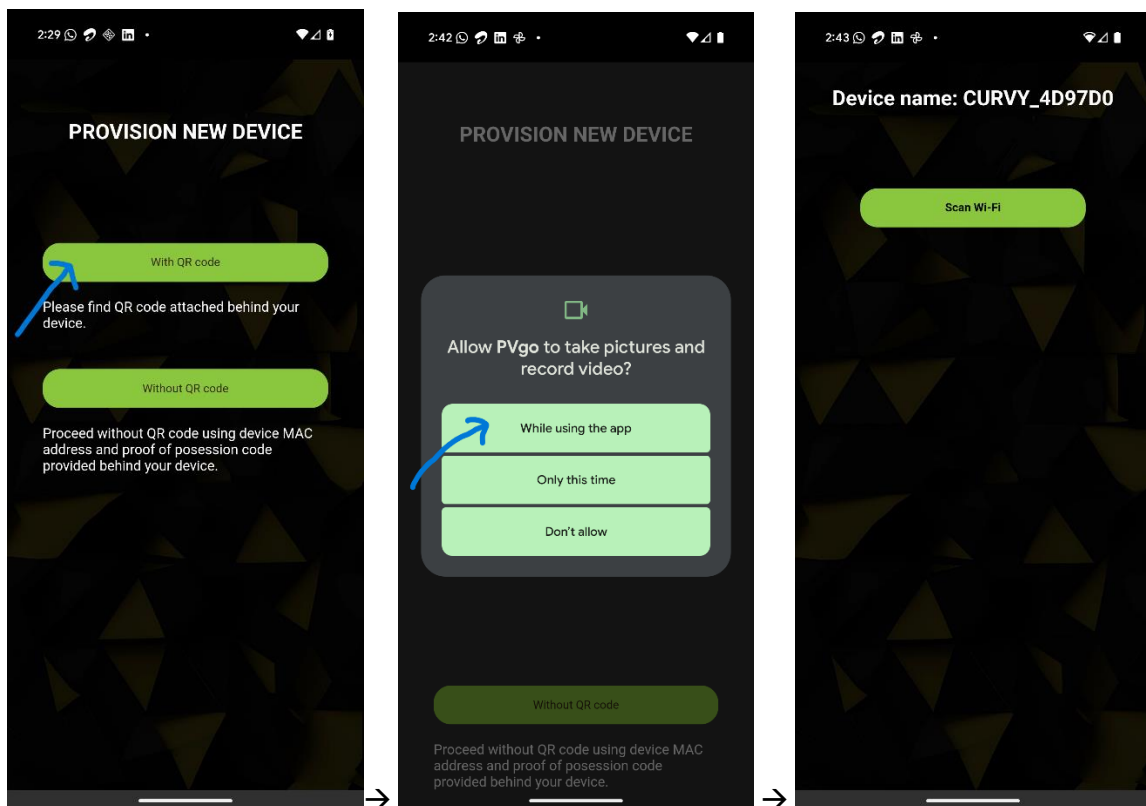


Once both permissions are granted, the PVgo device name will appear on the screen. Tap on it → Enter the POP (found on the QR code sticker) → Tap 'Next' → You will be taken to the Scan Wi-Fi page



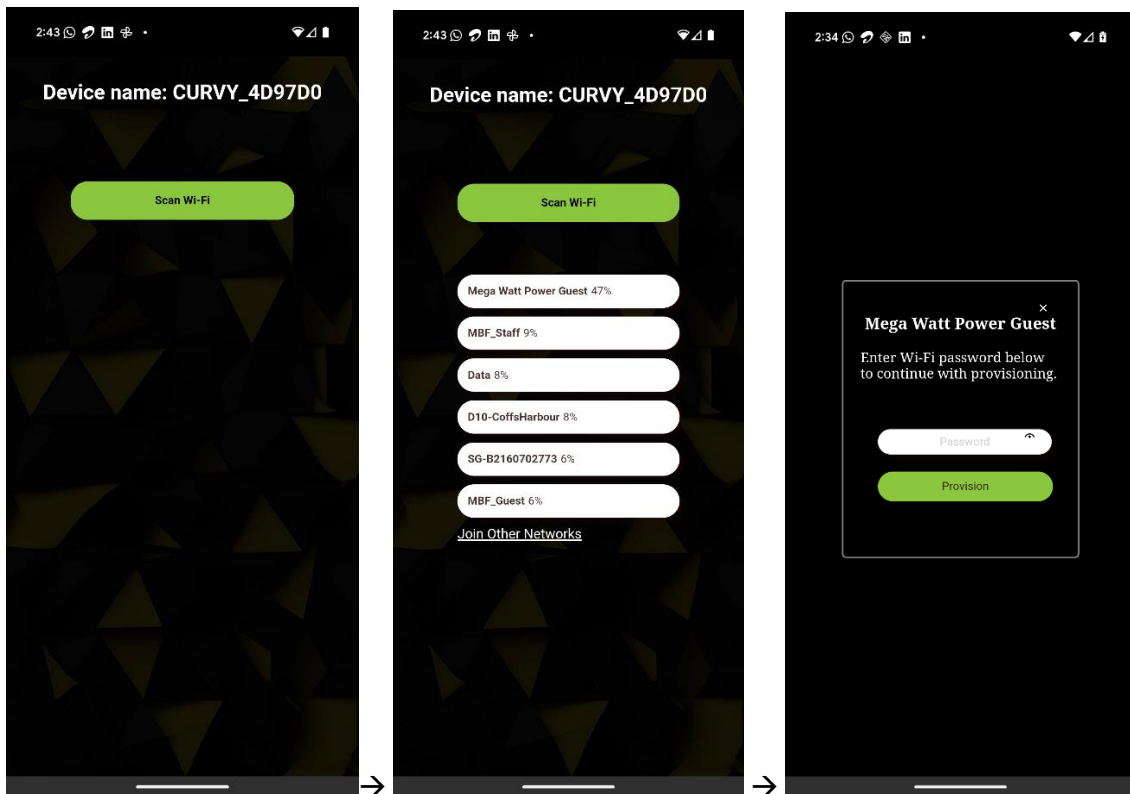
Or

With QR code:

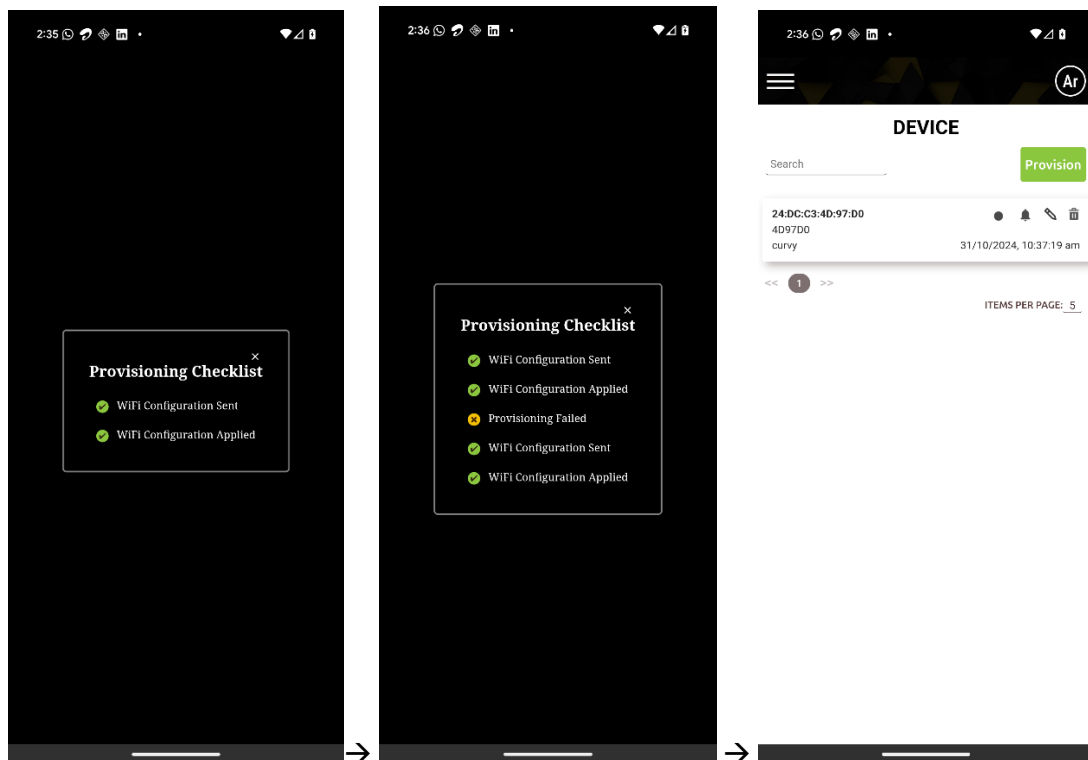


7) Scan Wi-Fi:

Click on Scan Wi-Fi → you will now see the list of all the available Wi-Fi networks. Select your Wi-Fi network and enter password when prompted.



8) Provisioning



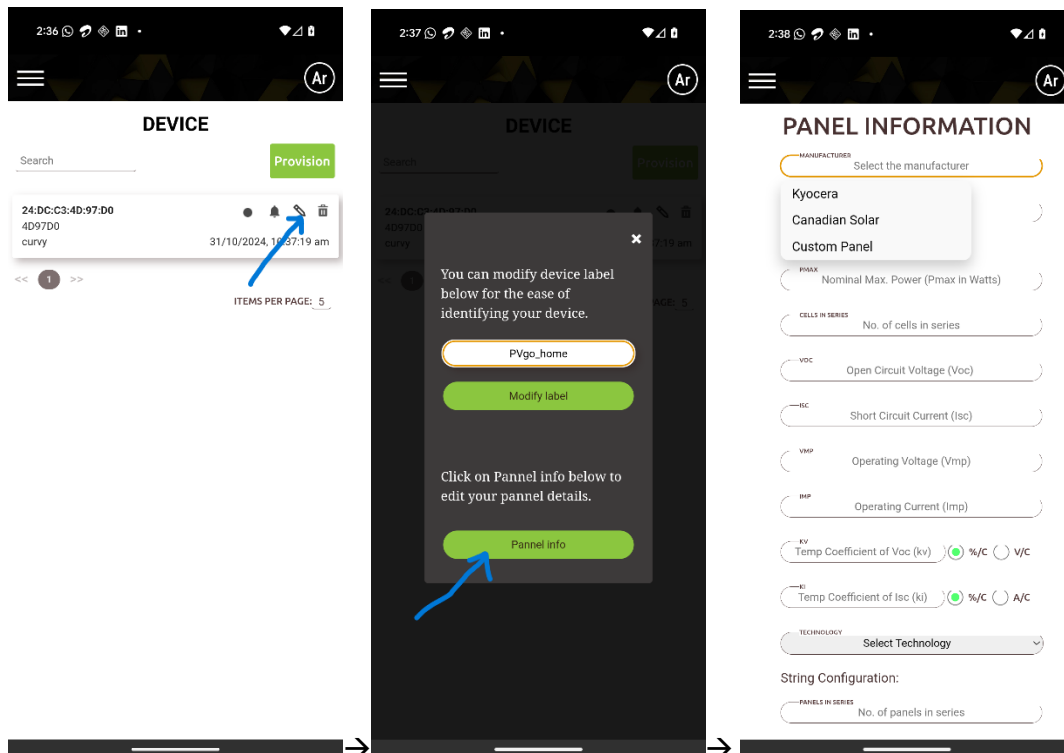
Once provisioning is successful, you will be redirected back to the Device page, where you will see the PVgo device you have just provisioned and added.

9) Set Solar panel info (important, thus recommended)

Click on edit icon as shown below.

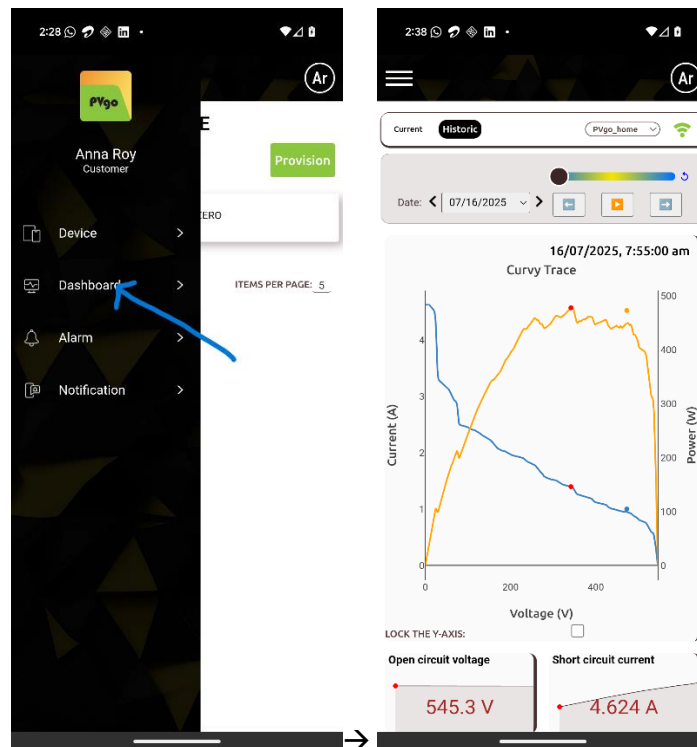
You can modify the device name (label) for easy identification, especially if you are using multiple PVgo devices.

Click on Panel info → PANEL INFORMATION page.



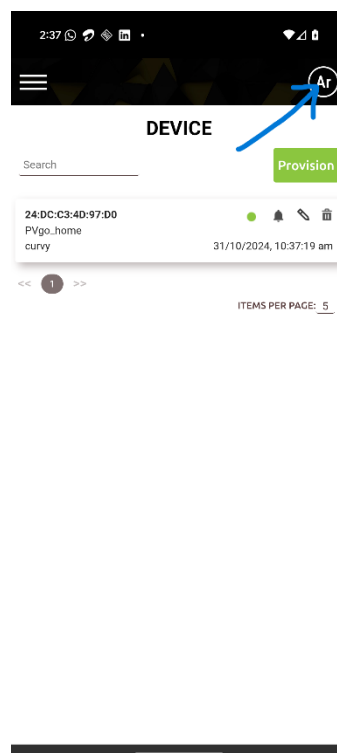
10) Now you are good to go.

Dashboards:



Similarly, you can access Alarms and notifications if any.

11) Profile, Add New User and Logout:



12) To get the best experience with PVgo, we recommend allowing notification permissions when prompted.

